

## MISSION

Ensure an older adult emergency department experience through high quality resource optimization, community relationships, diversity of health professionals, respecting individual patient values that returns patients to their desired level of independence and function.

## VISION

Create a comprehensive and age-friendly care model tailored to the older adult patient and their caregivers in the emergency department focusing on those at risk for cognitive dysfunction, unrecognized or pre-existing dementia, or challenged functional capacity.

## VALUES

Age-friendly, optimized independence, patient-valued with a sensitivity to diversity and caregiver support.



## Enhancing your ED care

Track your tests and professional interactions.

Pharmacist 9:30am - 6:30pm

Social Worker 9am - 6pm

Nurse Practitioners 12pm - 8pm

WHO/WHAT	NAME
Nurse(s)	
ED Provider	
Specialist	
Geriatrics	
Pharmacist	
Social Worker	
Tests (blood/CT/MRI)	

UCSF Health

Division of Geriatrics  
and

Department of Emergency Medicine



Gold - Level 1

Age-Friendly Health Systems

We are here to help with your health goals and partner with you.

## UCSF Division of Geriatrics and Department of Emergency Medicine

Focusing on age-friendly care for older adults in the emergency department (AFED). Assessing patients identified by ED professionals for additional focused assessment while in the emergency department, communicating with their primary care provider, and supporting ongoing inpatient services during their continuum of care.

## What to expect

- Referral assistance
- Older adult consult assessment when appropriate
- Walking assistive devices as appropriate
- Pharmacist review of your medications
- Social worker support
- Chaplain services upon request
- Food and beverages upon request



## Our community partners

On Lok Connected Care  
628-208-8543

UCSF Memory and Aging Center  
415-353-2057

UCSF Integrative Medicine (Geriatrics)  
415-353-7700

Family Caregiver Alliance  
415-434-3388 or 800-445-8106

Institute on Aging/Friendship Line  
415-750-4111 or 800-971-0016

Department of Disability and Aging Services Benefits Resource Hub  
415-355-6700

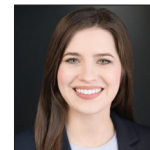
## Age-Friendly Team Professionals



**Mitchel Erickson**  
DNP, MS, ACNP-C,  
RN (Geriatrics)



**Camie Kuo**  
MS, FNP-C, RN  
(Geriatrics)



**Claire Bainbridge**  
PharmD  
(Pharmacy)



**Nida Degesys**  
MD, FACEP  
(EM)



**Journey Meadows**  
MS, AGNP-C, RN  
(Geriatrics)



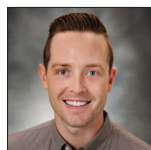
**Mary-Anne Cabasagan**  
MSW  
(Social Work)



**Stephanie Rogers**  
MD, MS, MPH  
(Geriatrics)



**James Hardy**  
MD  
(EM)



**Aidan Chambers**  
BSN, RN, PHN  
(ED Nurse Champion)



**Anna Hines**  
FNP-C, MPH, RN  
(Geriatrics)



**Todd James**  
MD  
(Geriatrics)



**Eugenio Williams**  
RN  
(ED Nurse Champion)

## Contact Us

### UCSF Division of Geriatrics

490 Illinois Street, Floor 08  
San Francisco, CA 94143-1265  
415-502-4893  
[roniela.turingan@ucsf.edu](mailto:roniela.turingan@ucsf.edu)  
[geriatrics.ucsf.edu](http://geriatrics.ucsf.edu)

### UCSF Department of Emergency Medicine

521 Parnassus Avenue  
San Francisco, CA 94143-0749  
415-353-1238  
[emergency.ucsf.edu](http://emergency.ucsf.edu)